

h i g h f a s h i o n m a n n e q u i n s

La gamme est composée d'une collection femme et d'une collection homme réalistes avec perruques.

Les mannequins femmes - collection 27 - sont déclinés dans 20 positions différentes - 3 versions de maquillage - 2 couleurs de peau et un choix de 26 perruques proposées en coloris noir intense ou blanc irisé.

Version 1 - maquillage A sur peau mat

Version 2 - maquillage B sur peau mat

Version 3 - maquillage PS sur peau claire

Les mannequins hommes - collection 30 - sont déclinés dans 7 positions différentes - 1 maquillage sur peau mat et un choix de 7 perruques proposées en coloris noir intense ou blanc irisé.

The range consists of one women collection and one men collection of realist mannequins with wigs.

The women mannequins - collection 27 - are declined in 20 different positions - 3 versions of make-up - 2 skin colours and a choice of 26 wigs in intense black or shiny white.

Version 1 - make-up A on natural skin colour

Version 2 - make-up B on natural skin colour

Version 3 - make-up PS on pale skin colour

The men mannequins - collection 30 - are declined in 7 different positions - 1 make-up on natural skin colour and a choice of 7 wigs in intense black or shiny white.

collection 27



Make-up A



Make-up B



Make-up PS

collection 30



Make-up A

0 4
0 5

collections 27 et 30 / collections 27 and 30 p008

pages techniques / technical pages p057

perruques femmes / women's wigs p075

perruques hommes / men's wigs p103

c o l l e c t i o n 2 7 e t 3 0







LD18
wig:200/C1
M.up:A
collection 27

1 0
1 1

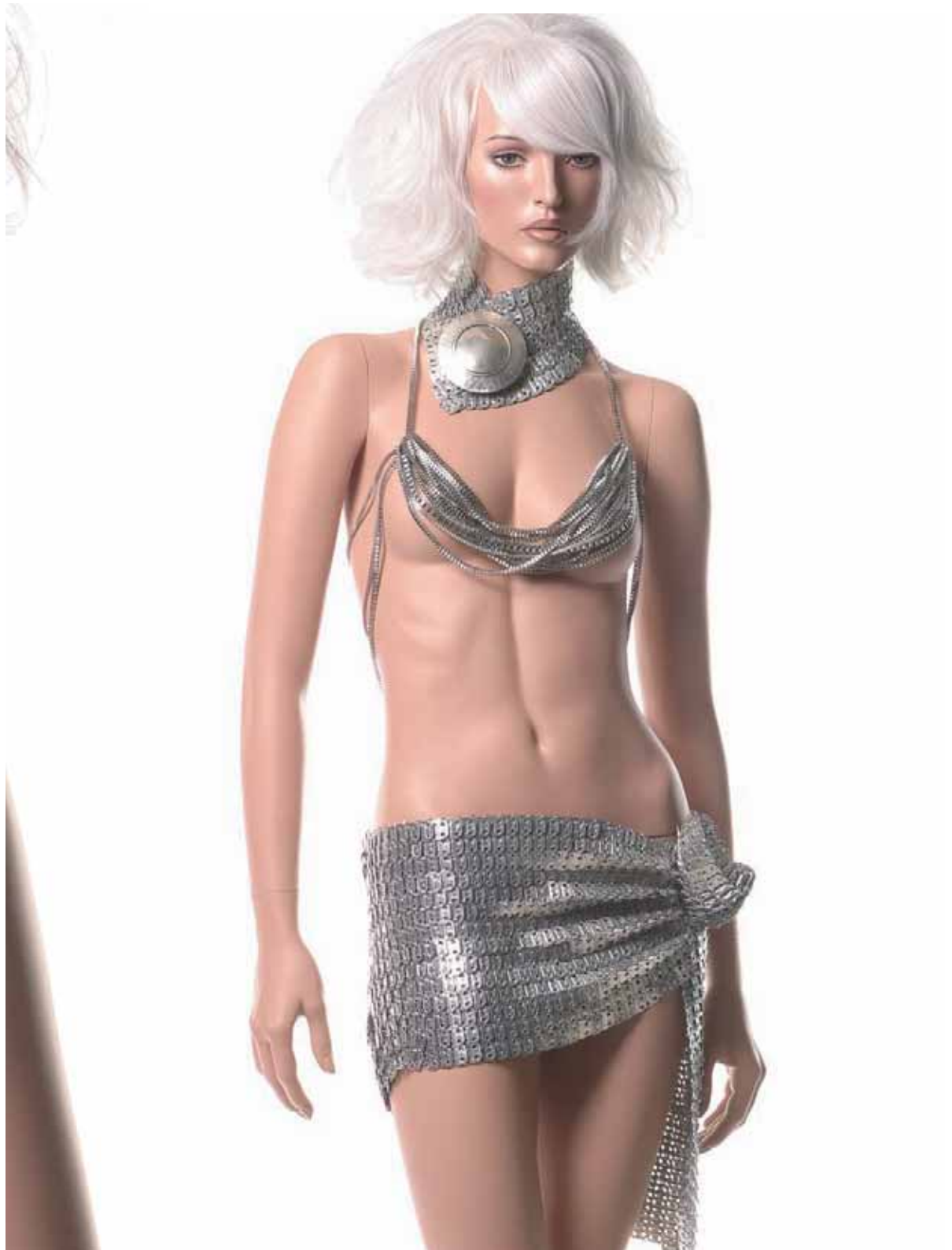




LD8
wig:201/C1
M.up:A
collection 27

1 2
1 3





LD20
wig:202/C1
M.up:A
collection 27

1 4
1 5





LD19
wig:203/C1
M.up:A
collection 27

1 6
1 7





RE7
wig:315/C1
M.up:A
collection 30



1 8
1 9

LD13
wig:200/C1
M.up:A
collection 27





2 0
2 1

RE2
wig:314/C1
M.up:A
collection 30



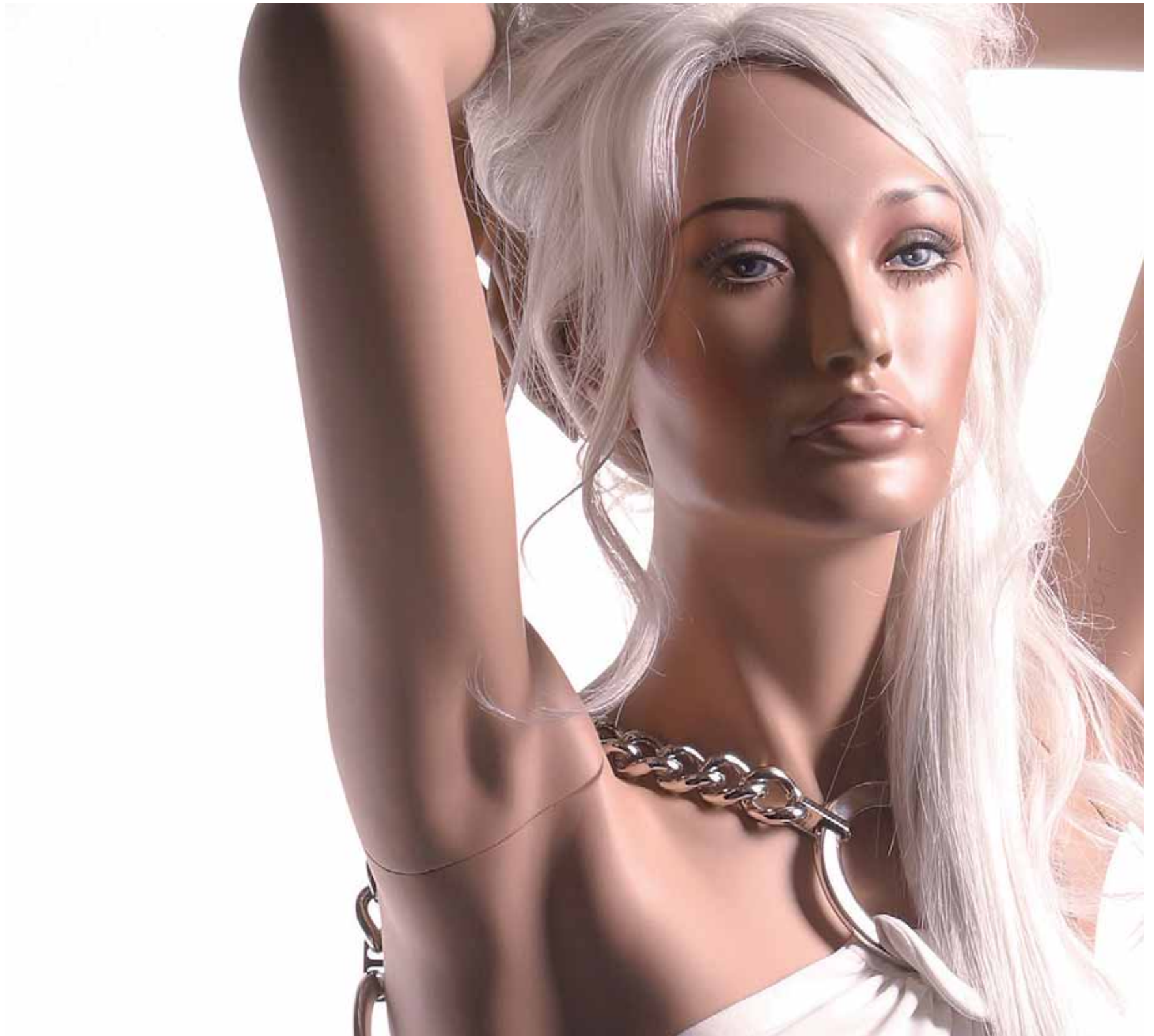
2 2
2 3



LD14
wig:200/C1
M.up:A
collection 27



2 4
2 5





LD11
wig:204/C1
M.up:A
collection 27

2 6
2 7





LD12
wig:200/C1
M.up:B
collection 27

2 8
2 9






LD14/PS
peau claire / pale skin
wig:205/1B
M.up:PS

3 0
3 1





RE4
wig:317/1B
M.up:A
collection 30

3 2
3 3

LD3/PS
peau claire / pale skin
wig:206/1B
M.up:PS





3 4
3 5



RE1
wig:316/1B
M.up:A
collection 30



LD15
wig:205/1B
M.up:A
collection 27





3 8
3 9



LD6
wig:207/C1
M.up:B
collection 27

4 0
4 1

LD16
wig:213/1B
M.up:B
collection 27









RE6
wig:318/1B
M.up:A
collection 30

4 4
4 5





LD9
wig: 203/C1
M.up: B
collection 27

4 6
4 7





RE3
wig:321/1B
M.up:A
collection 30

4 8
4 9



LD4
wig:208/1B
M.up:B
collection 27



5 0
5 1



LD2
wig:209/1B
M.up:A
collection 27



k9.1/WH collection 27



t e c h n i q u e / t e c h n i c a l

5 6
5 7

c o l l e c t i o n 2 7

5 8
5 9

VISAGE 01

sur positions / on positions:
LD1, LD8, LD14, LD15,
LD19, LD20.



VISAGE 02

sur positions / on positions:
LD3, LD4, LD10, LD11,
LD17, LD18.



VISAGE 04

sur positions / on positions:
LD13, LD16.



VISAGE 05

sur positions / on positions:
LD5, LD6, LD7, LD9, LD12.



v i s a g e s / f a c e s

VISAGE 06
sur positions / on positions:
LD2.



6 0
6 1

Mensurations / Measurements

Poitrine/bust	83cm
Taille/waist	65cm
Hanches/hips	83cm
Hauteur/height	181cm
Talons/heels	10cm

Confection (Tailles françaises / French sizes)

Haut/Top	36/38
Pantalon/trousers	36/38
Robe/dress	36/38
Pointure/shoes	38

Les mannequins sont livrés avec un socle en verre rond, une tige talon et une tige mollet. Les supports S47/GB, T80A/GB, C47/GB, T25A/GB sont en option.
The models are delivered with a round glass base, and with foot and calf fittings. The supports S47/GB, T80A/GB, C47/GB, T25A/GB are optional.

p o s i t i o n s



Make-up A



Make-up B



Make-up PS

< COLLECTION

27



LD 1

LD 2



LD 3



LD 4



LD 5



LD 6



LD 7

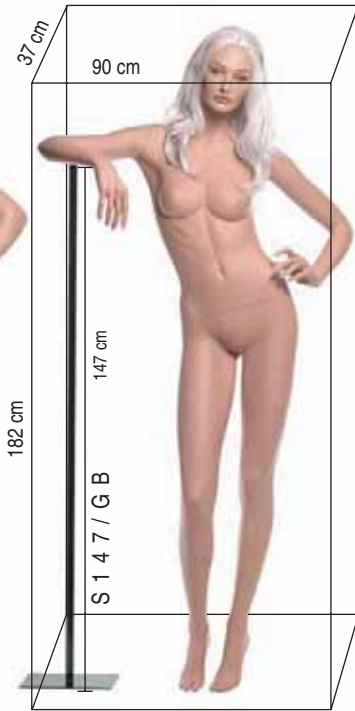


LD 8

6 2
6 3



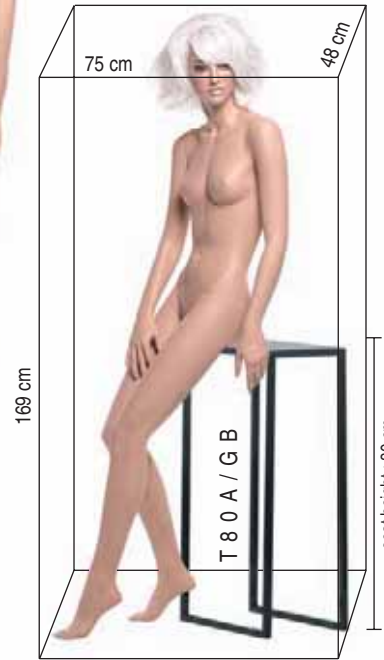
LD 9



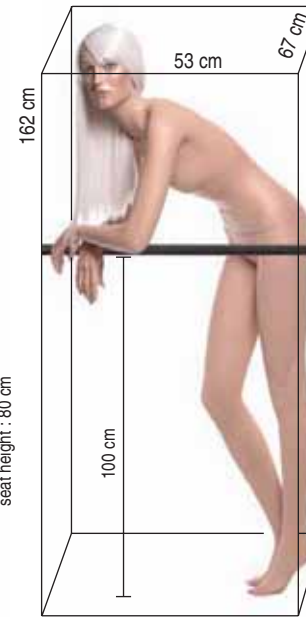
LD 10



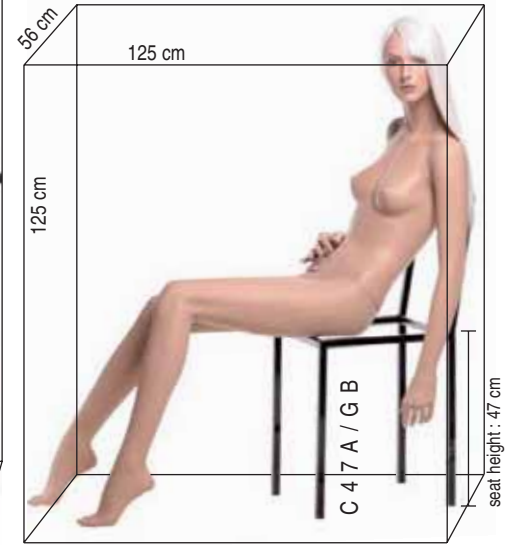
LD 11



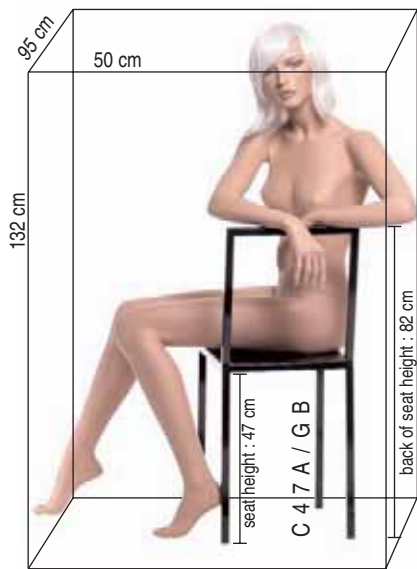
LD 12



LD 13



LD 14



LD 15



LD 16



LD 17



LD 18



LD 19



LD 20

6 4
6 5

GB = finition noir brillant / glossy black finish

c o l l e c t i o n 3 0

6 6
6 7

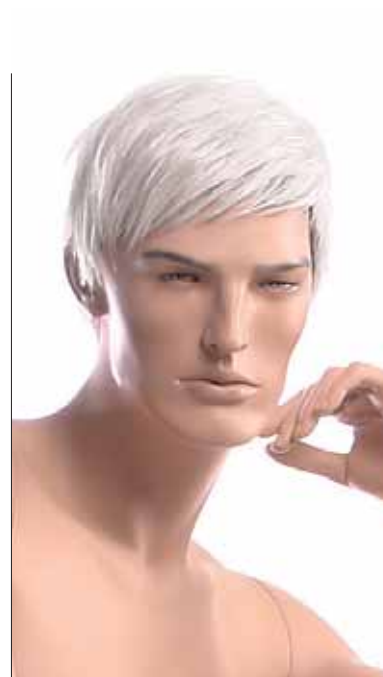
VISAGE 01
sur positions / on positions:
RE1.



VISAGE 02
sur positions / on positions:
RE2, RE5.



VISAGE 03
sur positions / on positions:
RE3, RE7.



VISAGE 04
sur positions / on positions:
RE4, RE6.



v i s a g e s / f a c e s

6 8
6 9

Mensurations / Measurements

Poitrine/bust	94 cm
Taille/waist	77 cm
Hanches/hips	86 cm
Hauteur/height	188 cm

Confection (Tailles françaises / French sizes)

Haut/Top	38/40
Pantalon/trousers	38/40
Veste/jacket	50
Pointure/shoes	43

Les mannequins sont livrés avec un socle en verre rond, une tige talon et une tige mollet. Les supports C47A/GB et T80A/GB sont en option.

The models are delivered with a round glass base, and with foot and calf fittings. The supports C47A/GB and T80A/GB are optional.

p o s i t i o n s

< C O L L E C T I O N

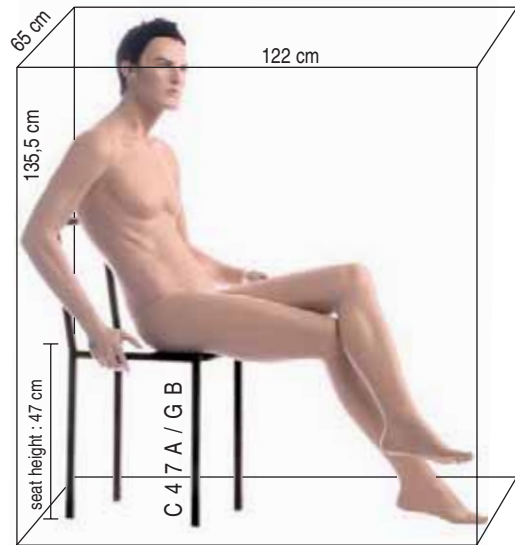
30



RE 1



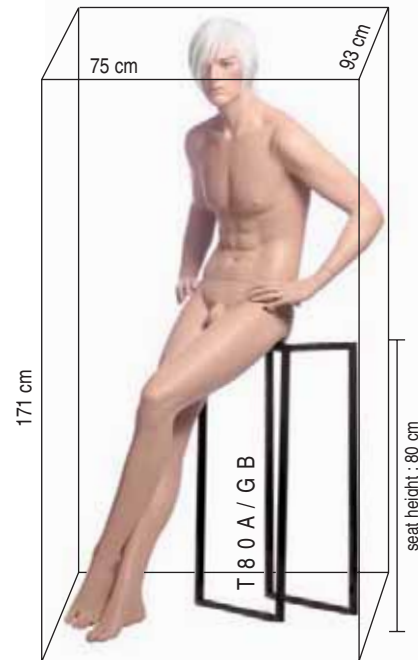
RE 2



RE 3



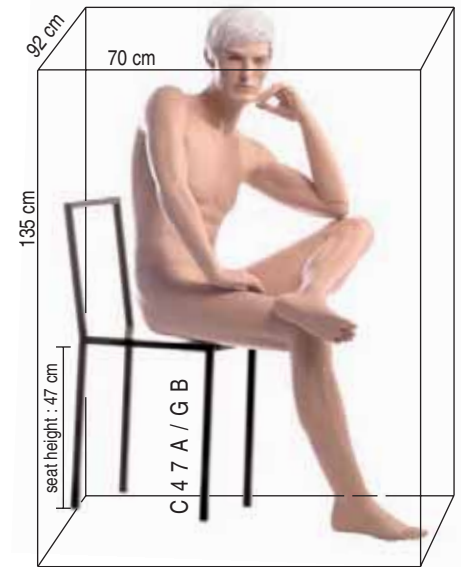
RE 4



RE 5



RE 6



RE 7

7 0
7 1

GB = finition noir brillant / glossy black finish

a c c e s s o i r e s / a c c e s s o r i e s 27/30

< C O L L E C T I O N S

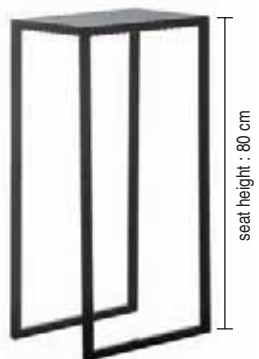


K9.1/WH

K9.2/WH



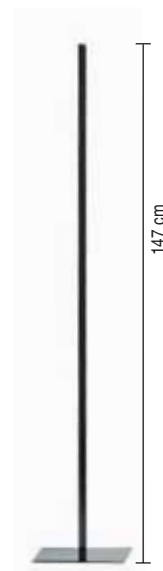
T 2 5 A



T 8 0 A



C 4 7 A



S 1 4 7

Supports / Supports

Supports disponibles
en finition noir brillant
et en métal brossé.
Supports available
in glossy black finish
and in brushed metal.

S147 est utilisé avec le mannequin LD10
S147 is used with the mannequin LD10

7 2
7 3

GB = finition noir brillant / glossy black finish
MB = métal brossé / brushed metal

p e r r u q u e s f e m m e s / w o m e n ' s w i g s

7 4
7 5



wig.200/C1



wig. 201 / C 1

7 6
7 7



wig.202/C1



w i g . 2 0 3 / C 1

7 8
7 9



wig.204/C1





wig . 206 / 1 B

8 0
8 1



w i g . 2 0 7 / C 1





wig . 2 0 8 / 1 B

8 2
8 3



wig.209/1B



wig. 210 / C 1

8 4
8 5



wig.211/C1



wig.212/C1

8 6
8 7



wig.213/1B





wig . 214 / 1 B

8 8
8 9



wig.215/1B





wig. 216 / 1 B

9 0
9 1



wig.217/1B





wig . 218 / 1 B

9 2
9 3



wig.219/C1





w i g . 2 2 0 / C 1

9 4
9 5



wig.221/C1





w i g . 2 2 2 / C 1

9 6
9 7

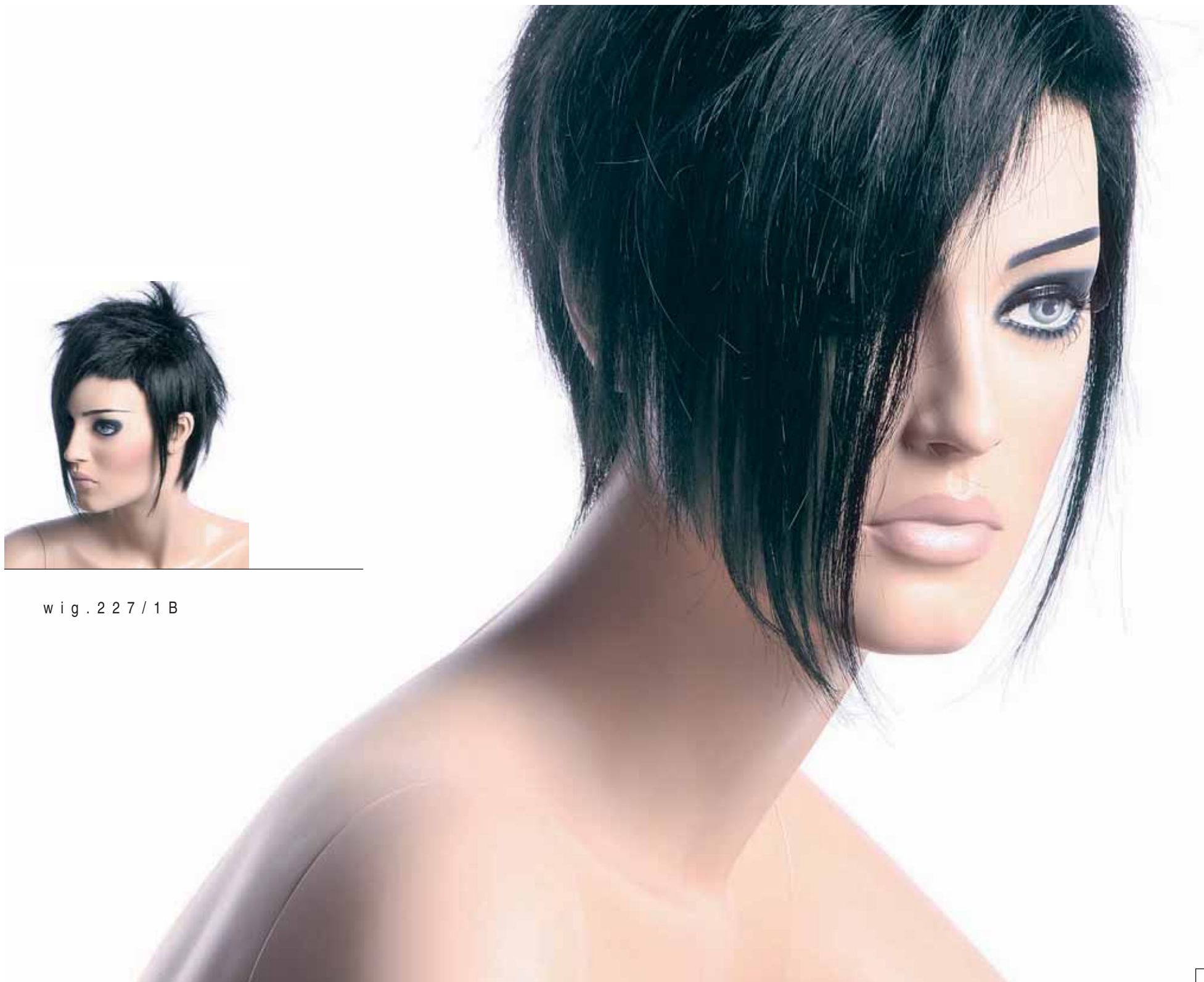


w i g . 2 2 5 / C 1



wig. 226 / C 1

9 8
9 9



w i g . 2 2 7 / 1 B



w i g . 2 2 8 / 1 B

1 0 0
1 0 1

m e n s w i g s / p e r r u q u e s h o m m e s

1 0 2
1 0 3



w i g . 3 1 4 / C 1





w i g . 3 1 5 / C 1

1 0 4
1 0 5



wig.316/C1



wig . 3 1 7 / 1 B

1 0 6
1 0 7



wig.318/C1





wig . 3 2 1 / 1 B

1 0 8
1 0 9



w i g . 3 2 2 / C 1

MANICHINI STORE

Manichini Store by Lepy & Lepy s.r.l. - Via Carlo Marx 140/A - 41012 Carpi (MO) - tel.059-641881 - fax.059-621977
www.manichinistore.it • info@manichinistore.it