

MANICHINI STORE

VOGUE-COLL 50



MANICHINI STORE

collection 50 Vogue.

La collection 50 Vogue a été conçue pour offrir une solution aux magasins jeunes et branchés, mais dans un style chic et élégant. La collection 50 Vogue représente des jeunes femmes à la morphologie longiligne et aux allures fraîches et romantiques. Leur peau claire et leur maquillage léger accentuent encore le sentiment de fraîcheur et de naturel. Les attitudes sont zen et décontractées. La collection 50 est déclinée dans 18 positions et proposée avec un grand choix de perruques. A travers les photos de ce catalogue nous avons voulu montrer que cette collection pouvait s'adresser aussi bien aux marques de luxe qu'au prêt à porter haut de gamme, Jeans haute couture et beachwear.

The collection 50 Vogue was designed for young and fashionable brands, but remaining both chic and elegant. The collection 50 Vogue represents young slim women with a fresh and romantic feel. Their pale skin and light make-up accentuates their fresh and natural look. The positions are zen and relaxed. The collection 50 is a selection of 18 poses with a large choice of wigs. Through the photos in this catalogue we have wanted to illustrate that this collection is just as suited for luxury 'haut couture' brands as they are for high market ready to wear brands, haute couture jeans and beachwear.

vogue 50



ref:509
wig:D/M1/26A

001



ref:5013
wig:277/26A



ref:5017
wig:ROOT/26A



ref:5012
wig:286/26A



ref:502
wig:D/MI/26A



ref:5015
wig:289/26A

ref: 5014
wig: D/MI/26A

009

vogue 50





ref:5017
wig:274/TDW130



ref:5010
wig:201/TDW130

ref:5013
wig:275/33



013



ref:506
wig:ROOT/26A



ref:5013
wig:285/26A



ref:5015
wig:286/26A



ref:502
wig:281/26A

brun/brown-6



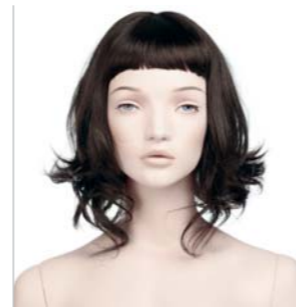
ROOT/6



217/6



267/6



269/6



282/6



283/6



287/6



291/6

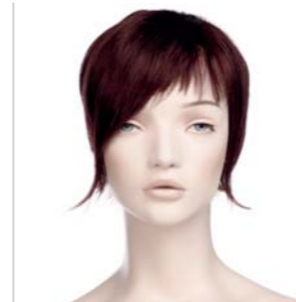
292/6



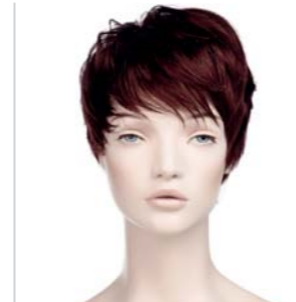
auburn/auburn-33



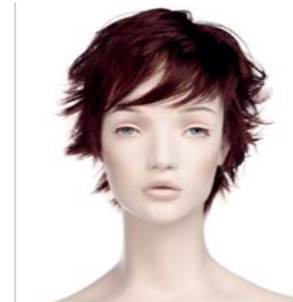
265/33



272/33



273/33



275/33

noir/black-1B



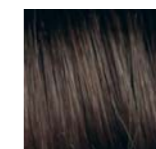
284/1B



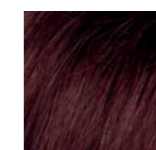
288/1B



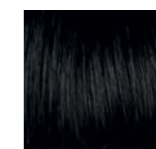
290/1B



brun/brown
ref:6



auburn/auburn
ref:33



noir/black
ref:1B

blond/blond - 26A



D/MI/26A



FLA10/26A



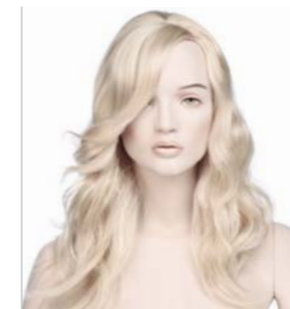
L/MI/26A



ROOT/26A



226/26A



263/26A



277/26A



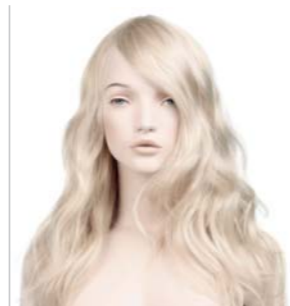
278/26A



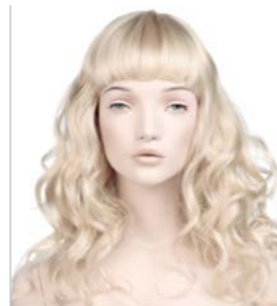
279/26A



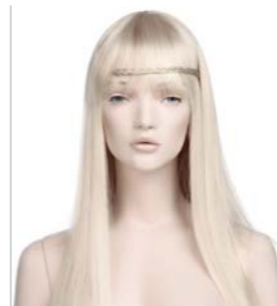
280/26A



281/26A



284/26A



285/26A



286/26A



289/26A

roux/red - TDW130



201/TDW130



217/TDW130



271/TDW130

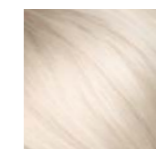


274/TDW130

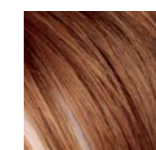
noisette/hazelnut - C7



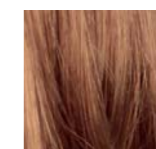
276/C7



blond/blond
ref:26A



roux/red
ref:TDW130



noisette/hazelnut
ref:C7

têtes/heads

Il existe 3 têtes différentes réparties sur l'ensemble des 18 positions de la collection 50 (voir ci-dessous)

Chaque position a une tête et un maquillage spécifique (voir pages 24 à 27).

Il y a uniquement la couleur des yeux qui changent pour les maquillages de la collection 50 Vogue.

There are three different heads spread over all 18 positions of the collection 50 (see below)

Each position has a head and a specific make up (see pages 24 to 27).

There is only the eye color that changes to the makeup of the collection Vogue 50.

maquillages / make up

Vog A yeux brun /brown eyes

Vog B yeux vert /green eyes

Vog C yeux bleu /blue eyes

Vog D yeux gris / grey eyes

vogue 50



tête/head 2/50
Vog B



tête/head 3/50
Vog C



tête/head 4/50
Vog D

genoux non articulés pour
habillage avec robes.
fixed knee joint for
dressing with dresses.



genoux articulés pour habillage
avec pantalons.
articulated knees
for dressing with trousers.



126cm

42.5cm

86cm



47cm

131.5cm



47cm

82cm



105cm

21cm

51cm

50cm



105cm

21cm

51cm

50cm

5011	5012	5013	5014	5015	5016	5017	5018
tete: 2/50	tete: 2/50	tete: 3/50	tete: 3/50	tete: 2/50	tete: 3/50	tete: 3/50	tete: 3/50
yeux: bleus	yeux: bleus	yeux: verts	yeux: bleus	yeux: verts	yeux: verts	yeux: verts	yeux: bleus
head: 2/50	head: 2/50	head: 3/50	head: 3/50	head: 2/50	head: 3/50	head: 3/50	head: 3/50
eyes: blue	eyes: blue	eyes: green	eyes: blue	eyes: green	eyes: green	eyes: green	eyes: blue
	support: C47A	support: C47A	support: T21A				support: T21A

tiges/fittings

4 tiges sont disponibles en fonction des tenues utilisées.
Les tiges talon et mollet sont livrées avec le mannequin. Les tiges fesse et dos sont en option.

Tige Talon :

Pour un habillage sans chaussure.

Tige Mollet :

Permet de chausser les deux pieds du mannequin.

Tige Fesse :

Permet d'habiller le mannequin avec jupe et bottes.

Tige Dos :

Permet d'habiller le mannequin avec pantalon et bottes

4 fittings are available depending on the clothes to be used.

The foot and calf fittings are delivered with the mannequin. The buttock and back fittings are optional.

Foot Fitting :

For dressing without shoes.

Calf Fitting :

Allows putting shoes on both feet.

Buttock Fitting :

Allows the mannequin to be dressed with skirts and boots.

Back Fitting :

Allows the mannequin to be dressed with trousers and boots.



Tige Talon
Foot Fitting

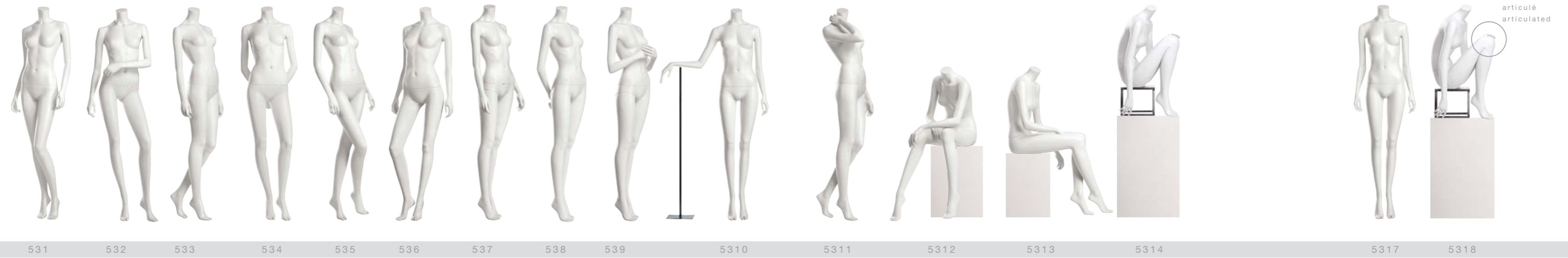
Tige Mollet
Calf Fitting

Tige Fesse
Buttock Fitting

Tige Dos
Back Fitting



collection 50



collection 53

MANICHINI STORE

